

During the year 2010 the UTM-CSIC has operated as owner / operator, the technical management of Research Vessels *García del Cid* and *Sarmiento de Gamboa*, and achieved the technical and logistical support of the *RV Hesperides*, being two of them Large Scale Scientific Technology Facilities (LSTF).

The marine operation has resulted in 542 days at sea, of which 89% are days of exploration in the Atlantic (Galicia Margin, Gulf of Cadiz, Canary Islands, South Atlantic, etc.), Mediterranean Sea (Tyrrhenian Balearic Islands), Weddell Sea (Antarctica), etc.

We have succeeded in supporting 32 research cruises of which

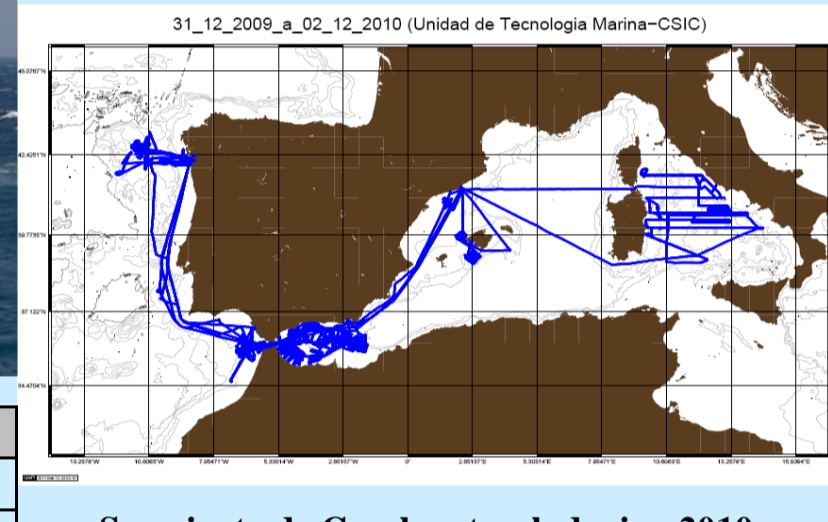
- 21 were from the National R & D Plan, of the Ministry of Science and Innovation, including a cruise for the last International Polar Year
- 3 cruises for European Union projects
- 1 Consolidated National Programme
- 1 project for the Xunta de Galicia
- 1 project for the Ministry of Foreign Affairs to the extension of the continental shelf
- 4 actions for commissioning and testing of scientific equipment, mainly seismic equipment and ROV's of Spanish Institute of Oceanography.



R/V Sarmiento de Gamboa

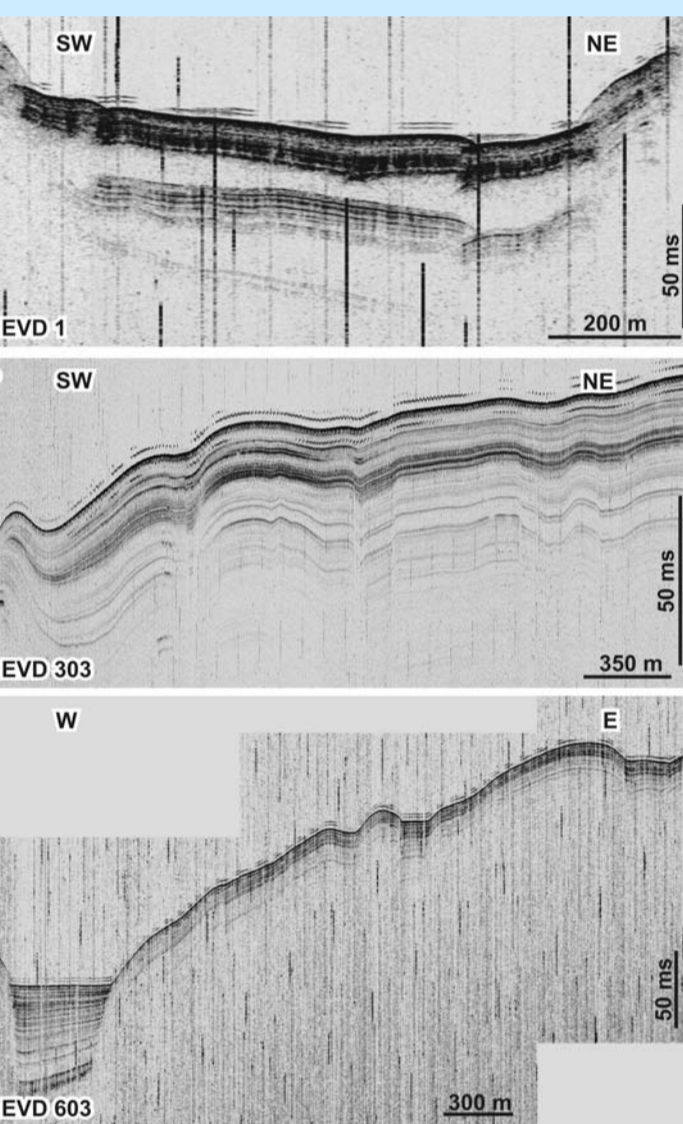


Ship Activity	days	% over 365
Cruises	162	44.4
Test at sea (seismics + fish)	50	13.7
Harbour mob/demob	78	21.4
Transit	29	7.9
Insatl/Maint.	46	12.6
TOTAL:	365	100



During the year 2010 the UTM-CSIC installed, tested and operated the new seismic scenario with a complete success. Also piston corer was implemented. The maximum length now is 7.5 m and will be increased to 15 m in the future.

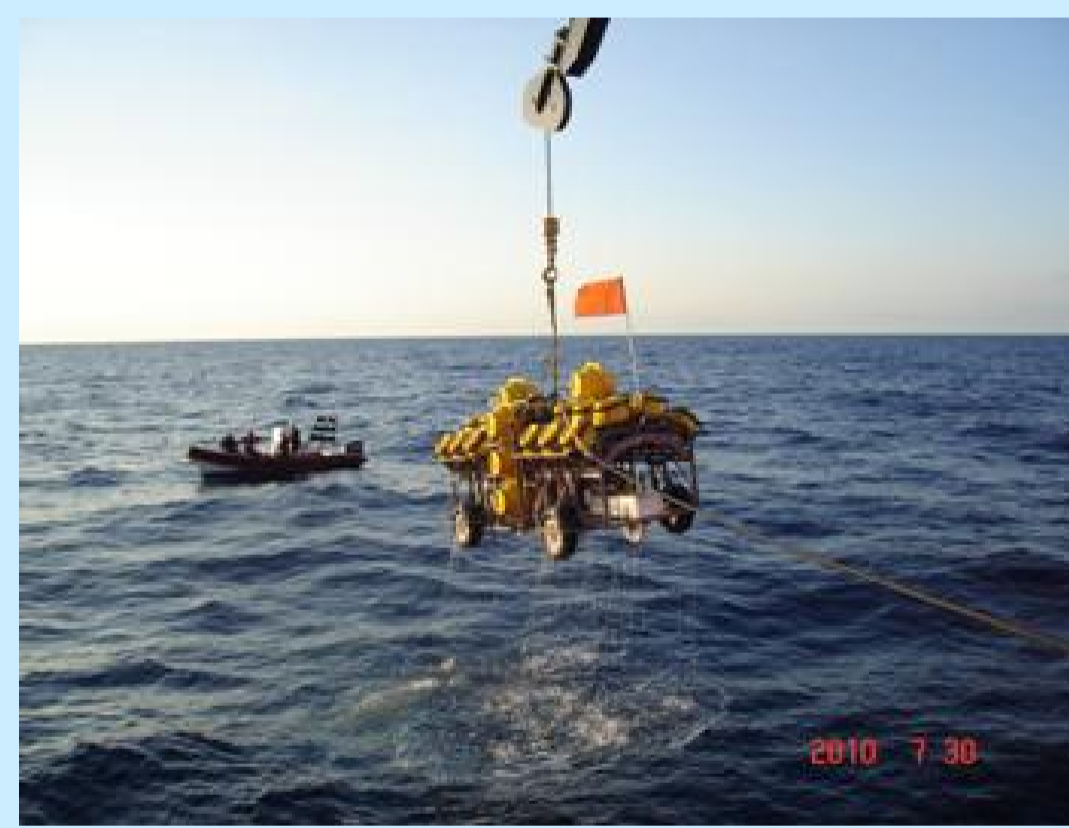
One of the seismic compressors was installed on the engines room.



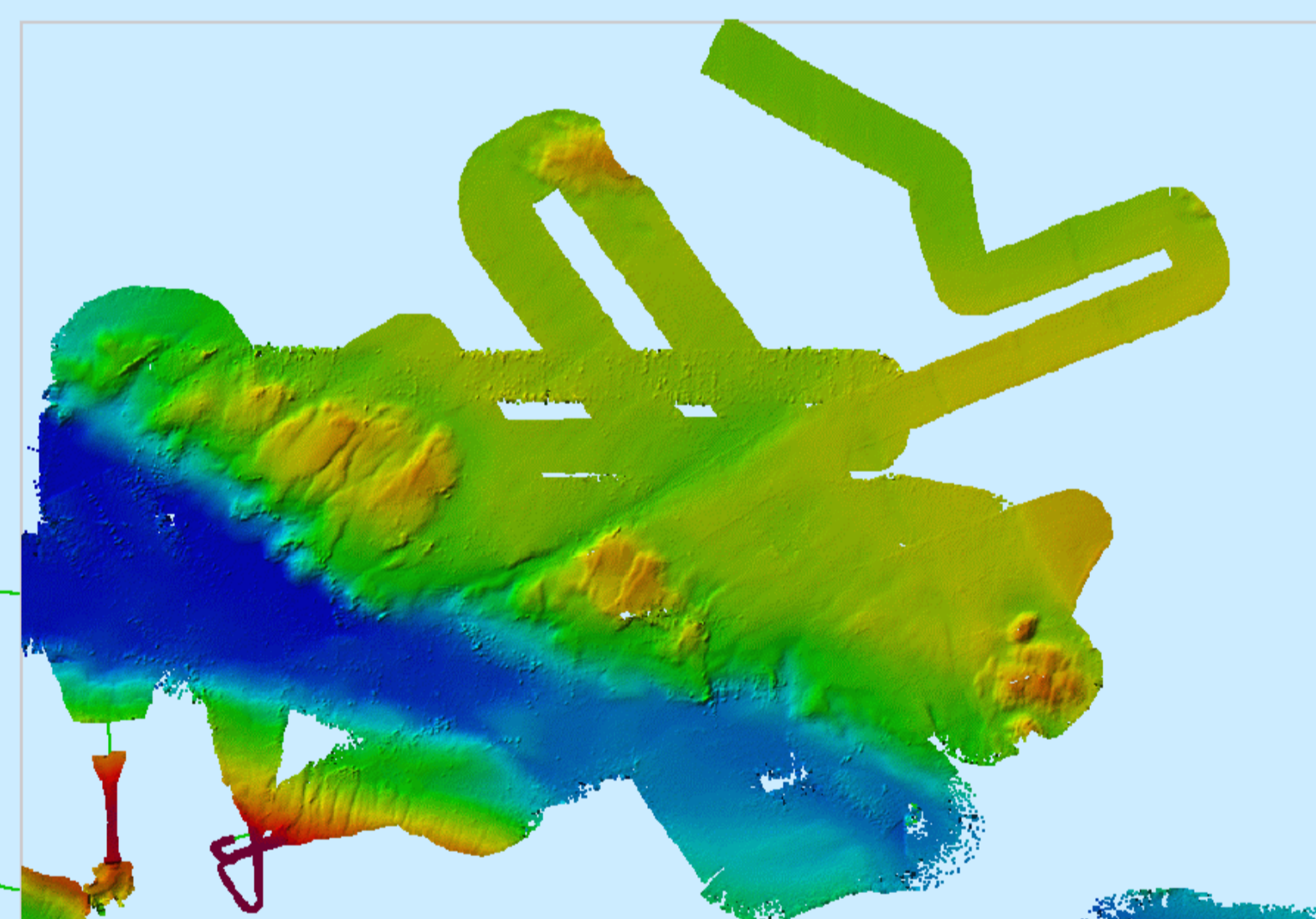
ATLAS Parasound parametric profiles across the Yussuf fault zone (a), the southern Alboran ridge zone (b) and the Adra basin zone (c). Faults reach up to the seafloor, confirming their present-day tectonic activity. EVENT Cruise



GEOSTAR



MOVE Recovery. NIOZ Bartering agreement



Bathymetric chart of the of the faulted Adra Ridge and Alboran Channel. ATLAS DS, EVENT Cruise

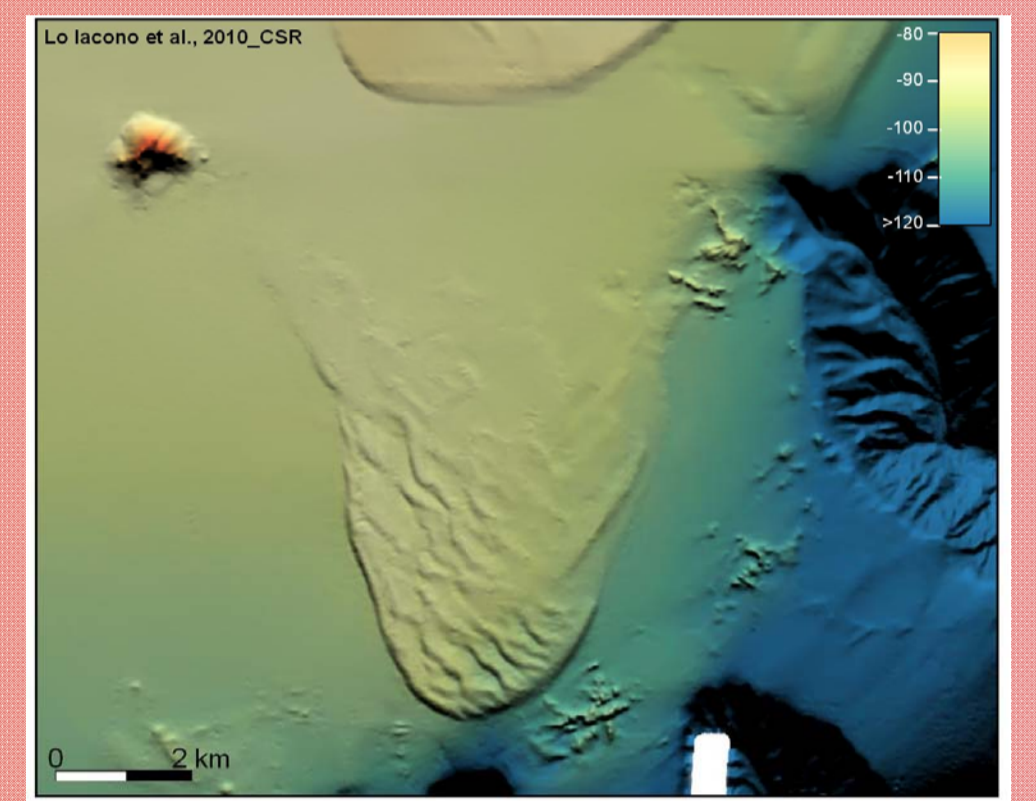
R/V García del Cid



Ship Activity	Days	% over 208
Cruise days	112	52%
Harbour + mob/demob	73	34%
Transit	20	9%
Test	3	1%



JAGO operation



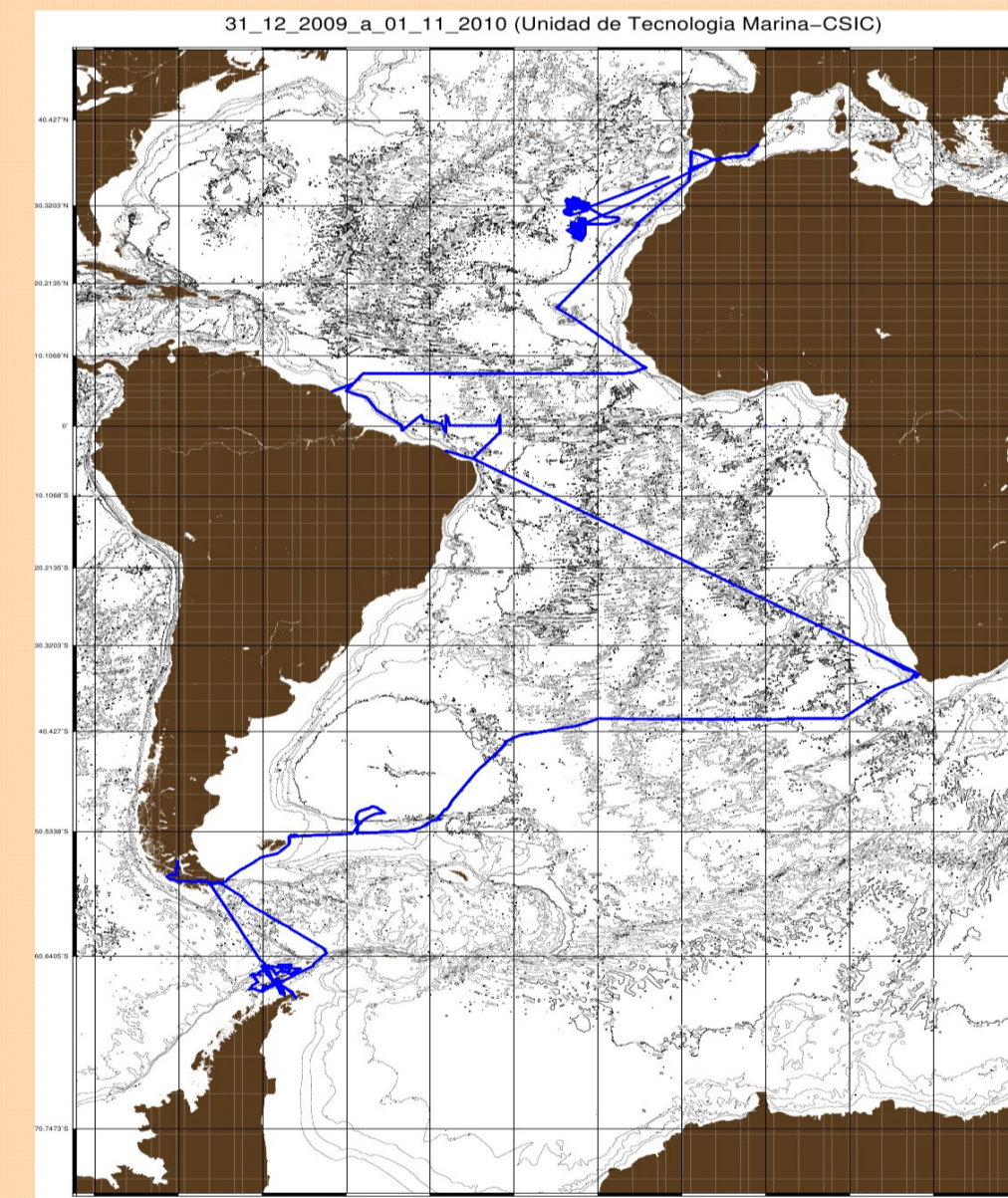
Multibeam image from R/V García del Cid, ELAC Seabeam 1050D

During the year 2010 the B/O García del Cid was full contracted (7 months). Two cruises with JAGO submarine (IFM-GEOMAR) were carried in Cap de Creus and Menorca island within INDEMARES-LIFE EC project.

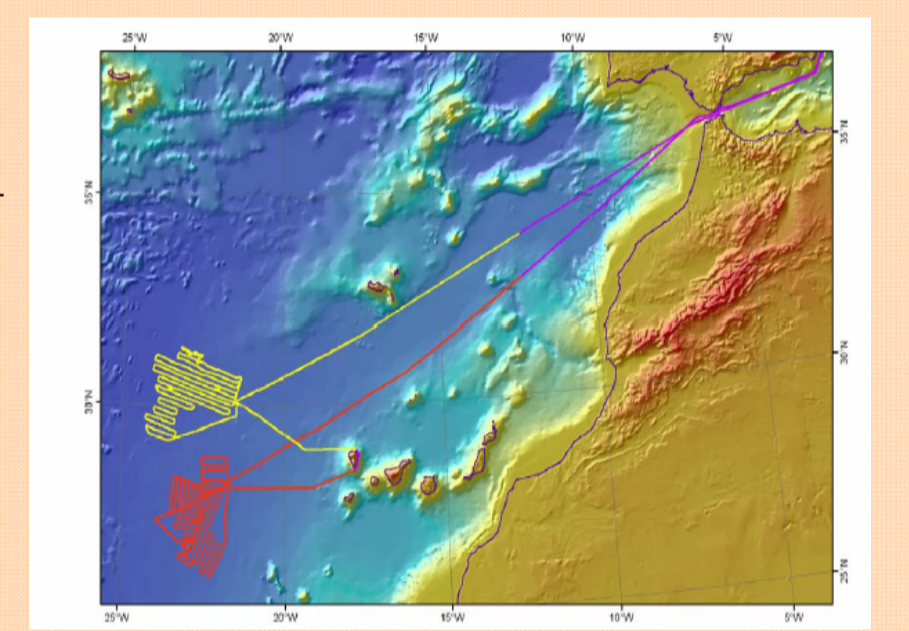
R/V Hesperides



Ship Activity	days	% over 365
Cruise	142	38.9
Harbour+ mob/demob	23	6.3
Transit	6	1.6
Enlistment	89	24.4
Test	10	2.7
Programmed Stop	65	17.8
EEZ cruise	30	8.2
Total	365	100.0



R/V Hesperides 2010 track



EEZ Extension cruise



New winch installed, 11 mm dia. cond. Cable 8000

Porriño Facilities



Near Vigo, 1200 m² warehouse with two overhead cranes of 16 Ton each. Workshop and offices. (FEDER funds)

New Equipment



Air Guns structure (UTM)



Streamer Winch



New AUVs: image + side scan sonar (100 m) and water quality (200 m)



Piston Corer on Hesperides

R/V Las Palmas



1978 - 41.2 m O.L.

R/V Las Palmas is a Spanish Navy supplier for Antarctic stations services. With 105 days service and transportation of 108 researchers in 2009-2010

WWW.UTM.CSIC.ES

Arturo Castellón arturoc@cmima.csic.es

Juan José Dañobeitia jjdanobeitia@cmima.csic.es

Luis Ansorena ansorena@cmima.csic.es